

# SUNMI V2s PLUS Smart Mobile Terminal

New

Pushing the boundaries to help you achieve more.

Standard Version / Scanner Version / GMS Version

## Three printing types supported for increased flexibility.

Support receipt, label and black mark printing\* and 80mm printing sizes. Besides printing speed is upgraded up to 80mm/s.

## 7.7V/3500mAh large capacity removable battery. Duty round the clock, effortlessly.

A fully charged V2s PLUS can last for 14 days in standby mode, or work continuously for over 16 hours. Removable battery design brings longer run time and lasting productivity.

## One scanning engine to support all types of barcodes\*.

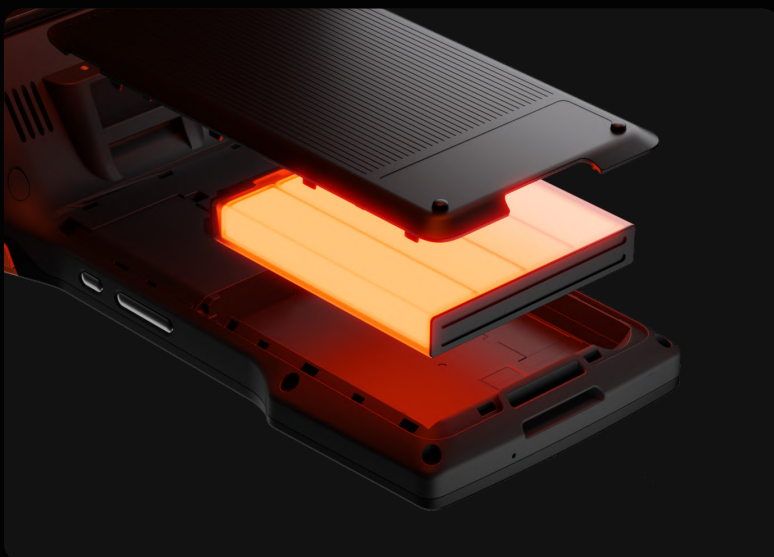
Read any 1D or 2D barcodes, even if scratched, folded or stained.

## New configuration for a performance boost.

The leap in performance gives you the ability to smoothly switch between multi-apps and power up your business. Android 11 OS further enhanced device's security and integration with other systems.



\* Black mark printing is available in the Scanner Version/GMS Version.  
Scanning engine is available with the Scanner Version.





## SUNMI V2s PLUS Tech Specs

### General Configuration

<b>OS</b> Android 11 Sunmi OS	<b>CPU</b> Cortex-A53 Octa-Core (4*2.0GHz+4*1.5GHz)	<b>Display</b> 6.22"HD+, 1520x720, IPS	<b>Printer</b> High Speed 80 thermal printing, printing speed 80mm/s MAX, support Roll Diameter 50mm Support receipt printing 80mm, label printing(Wide 60mm~80mm; High>20mm; Gap>2mm)	
<b>Speaker</b> 1* 1.2W	<b>SIM</b> 2*Nano SIM	<b>MicroSD Slot</b> 1*MicroSD	<b>Communication</b> 4G/3G/2G	<b>Wi-Fi</b> 2.4G/5G IEEE 802.11 a/b/g/n/ac
<b>Bluetooth</b> Support Bluetooth 2.1/3.0/4.2 Support BLE	<b>GPS</b> GPS/Glonass/Beidou/ Galileo	<b>Interface</b> USB Type-C OTG	<b>Battery</b> Removable, Lithium Polymer battery 7.7V/3500mAh (equal to 3.85V/7000mAh)	<b>Adapter</b> INPUT: AC 100~240V OUTPUT: 5V/2A
<b>Dimensions</b> 237.2*100.91*63mm	<b>Total Weight</b> 535g	<b>Drop Test</b> 1.0m *Data from Sunmi Lab	<b>Environment</b> Operating temperature: 0~45°C storage temperature: -40~70°C	<b>Base (Option)</b> Multi-function Base

	V2s PLUS Standard	V2s PLUS Scanner & NFC	V2s PLUS GMS
<b>Memory</b>	2GB RAM+16GB ROM	3GB RAM+32GB ROM	3GB RAM+32GB ROM
<b>Scanner</b>	N/A	2D barcode scan engine	N/A
<b>NFC</b>	N/A	Supports Type A&B card, Mifare card Felica card; ISO/ICE 14443 and ISO15693 compliant	Supports Type A&B card, Mifare card Felica card; ISO/ICE 14443 and ISO15693 compliant
<b>PSAM Slot</b>	N/A	4* PSAM	4* PSAM
<b>Camera</b>	Rear:5MP Auto Focus with Flash LED, Support 1D/2D	Rear:13MP Auto Focus with Flash LED, Support 1D/2D Front:2MP FF	Rear:13MP Auto Focus with Flash LED, Support 1D/2D Front:2MP FF
<b>Button</b>	Power On Button Volume Up/Down	Power On Button Volume Up/Down Scanner	Power On Button Volume Up/Down